

EMANATION OF PROTEINS

PR^{OT}AGR^{OT}



PET

DEDICATED POULTRY

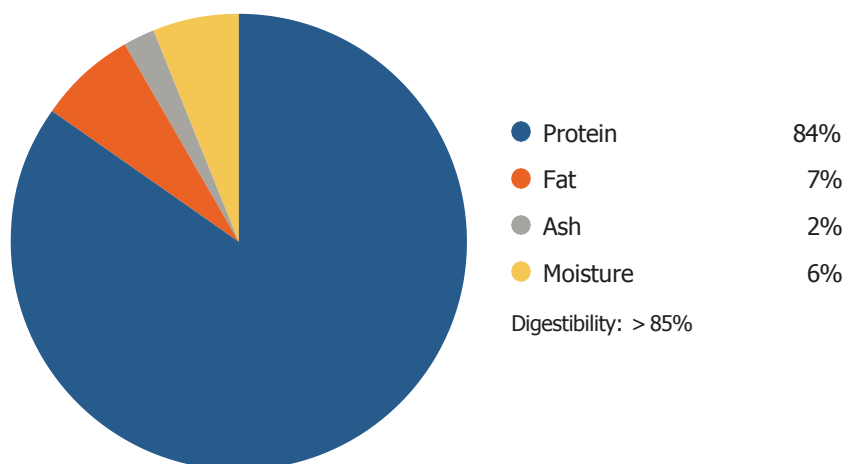
EM'PET

Premium Protein Meal for Petfood

PRODUCT DATA SHEET

EM'PET

TYPICAL NUTRIENT COMPOSITION



FATTY ACID PROFILE (% OF FAT)

MUFA	38,26%
PUFA	19,82%
n-3 PUFA	1,52%
n-6 PUFA	18,29%
SFA	38,81%

PRODUCT CHARACTERISTICS

- High (pepsin) digestibility (>85%)
- Fresh intense flavour
- Very stable composition
- Free from contaminants (dioxins, heavy metals)
- Light brown fine powder

FRESHNESS

Peroxide Value	< 5 mEq O ₂ /kg fat
Free Fatty Acids	<15 % as oleic acid

ADDED ANTIOXIDANT

BHA/BHT on demand

MICROBIOLOGICAL ANALYSIS

Salmonella	absent in 25g
Enterobacteriaceae	< 10 cfu/g

APPLICATION

EM'PET is a keratin rich product and has excellent nutritional and organoleptic properties as a cost effective and healthy protein source in petfood. Thanks to the favourable digestible amino acid pattern and extremely low ash content it will serve as a more versatile substitute for other protein sources. It is selected for its specific smell and taste, very much appreciated by dogs and other pets.

PROCESS

EM'PET is a premium hydrolysed protein meal produced from selected and purified chicken feathers at a 'unique poultry' dedicated facility in Dendermonde, Belgium, using a patented production process. The purification and selection of the raw material assure product uniformity whereas the specific processing parameters give EM'PET its outstanding digestibility and organoleptic characteristics. The unique low temperature drying guarantees the overall product quality.

STORAGE & SHELF LIFE

The product is best kept in a cool and dry place and has a shelf life of minimal 1 year from date of manufacture. The product is free of pathogens. Type and quantity of anti-oxidant can be adjusted on request.

PACKAGING AND REGISTRATION

EM'PET appearance is a light brown, very fine powder. It is delivered in bulk, big bags up to 1500kg or 25kg bags.



Produced in Belgium by Empro Europe NV, according to European legislation, approval number 114513/1-709 registration number 2.207.157.202



PROTAGRO B.V.
Chaussée d'Alsemberg 897
B-1180 Uccle
Belgium
Tel: +32 469 41 80 20
E-mail: contact@protagro.com
www.protagro.com